



Outdoor Recreation at Gleason-Hubel Wildlife Area

Published: February 05, 2020

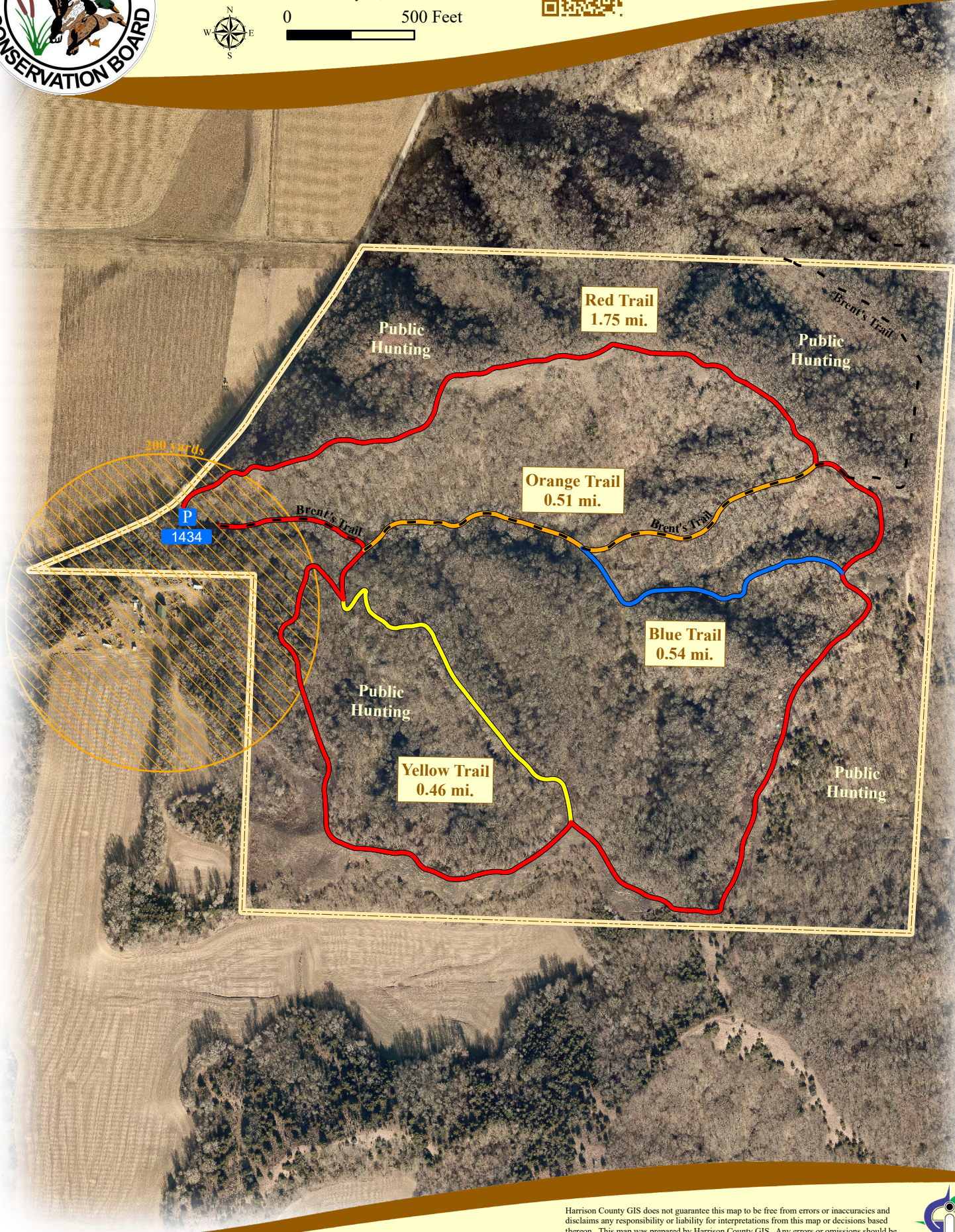


0 500 Feet



1234 Address

P Parking



Harrison County GIS does not guarantee this map to be free from errors or inaccuracies and disclaims any responsibility or liability for interpretations from this map or decisions based thereon. This map was prepared by Harrison County GIS. Any errors or omissions should be reported to the this office at (712) 644-1324 or gis@harrisoncountya.org.

