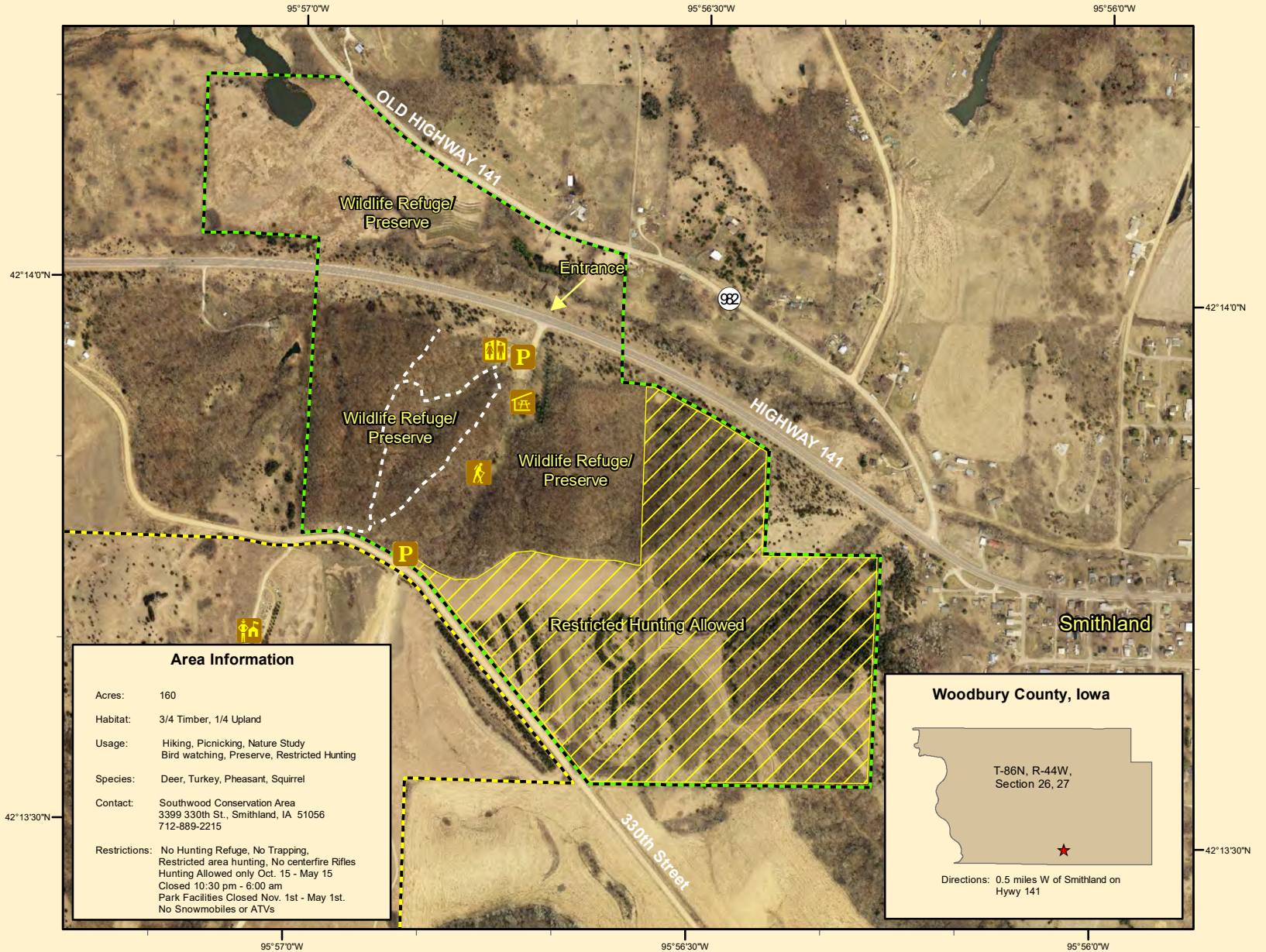


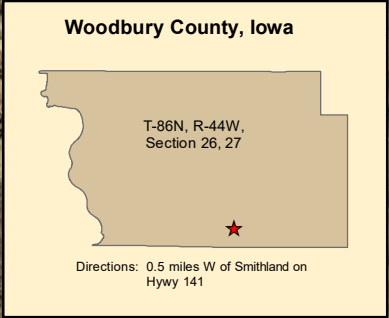


Woodbury County Conservation Dept.

4500 Sioux River Road, Sioux City, Iowa 51109
Phone: 712-258-0838
www.woodburyparks.org



Area Information	
Acres:	160
Habitat:	3/4 Timber, 1/4 Upland
Usage:	Hiking, Picnicking, Nature Study Bird watching, Preserve, Restricted Hunting
Species:	Deer, Turkey, Pheasant, Squirrel
Contact:	Southwood Conservation Area 3399 330th St., Smithland, IA 51056 712-889-2215
Restrictions:	No Hunting Refuge, No Trapping, Restricted area hunting, No centerfire Rifles Hunting Allowed only Oct. 15 - May 15 Closed 10:30 pm - 6:00 am Park Facilities Closed Nov. 1st - May 1st. No Snowmobiles or ATVs



Legend			
	Hiking Trails		Restricted Hunting Allowed
	Fowler Forest Preserve		Parking
	Southwood Conservation Area		Picnic Shelter
	Ranger Station		Restrooms
	Trail Head		Trail Head

Fowler Forest Preserve



Aerial Photo - Summer, 2010
Map Creation Date: 1/2011

Disclaimer: Information and boundaries depicted on this map have been carefully reviewed. However, this data is not guaranteed to be free of errors or inaccuracies as provided by Woodbury County or other providers and sources of data contained in this map. Boundary signs have been placed on our areas to ensure users do not trespass on private property.