

Bouteloua curtipendula

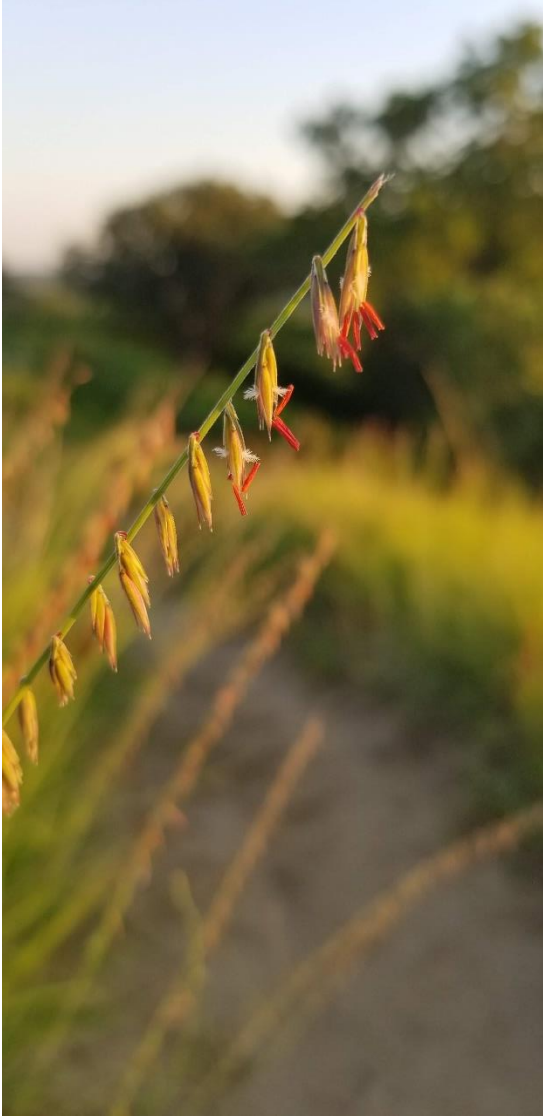
Sideoats grama

Full, partial Sun

Blooms August-September

Height: 2 feet

Dry to medium soil moisture



Echinacea angustifolia

Narrow-leaved coneflower

Full Sun

Dry-medium soil moisture

Height: 2 feet

Blooms June-July



Eryngium yuccifolium

Rattlesnake master

Full Sun

Medium dry to medium wet soil moisture

Height: 4 feet

Blooms July-September



Liatris aspera

Rough blazing star

Full or partial sun

Dry to medium soil moisture

Height: 3 feet

Blooms July-October



Liatris punctata

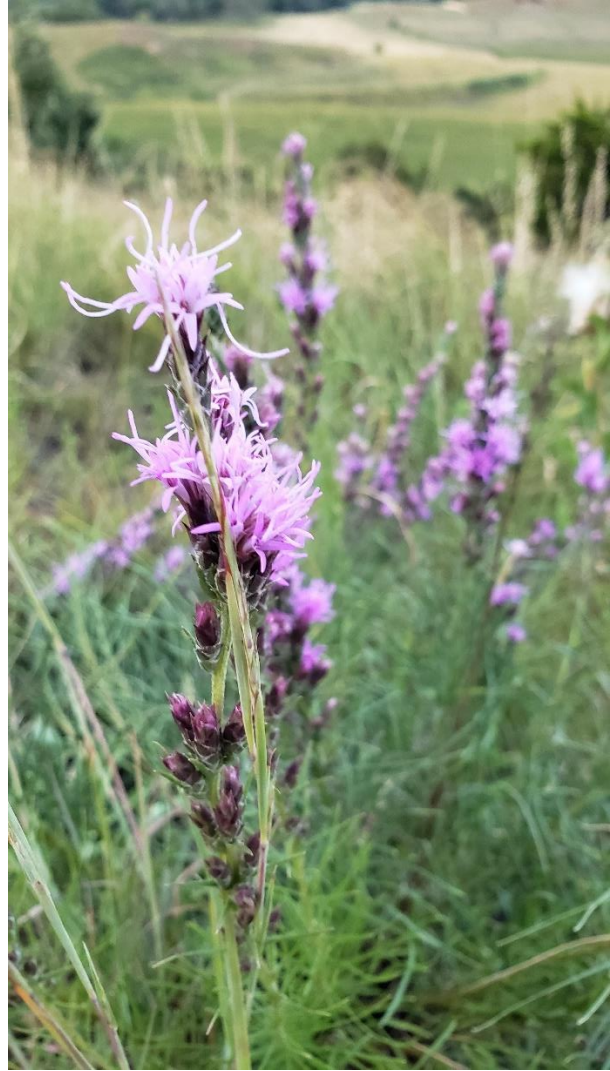
Dotted blazing star

Full, partial sun

Medium to dry soil moisture

Height: 2 feet

Blooms July-September



Liatris pycnostachya

Prairie blazing star

Full or partial sun

Medium to wet soil moisture

Height: 4 feet

Blooms July-September



Penstemon grandiflorus

Large-flowered beardtongue

Full or partial sun

Dry to medium soil moisture

Height: 2 feet

Blooms May-June



Ratibida pinnata

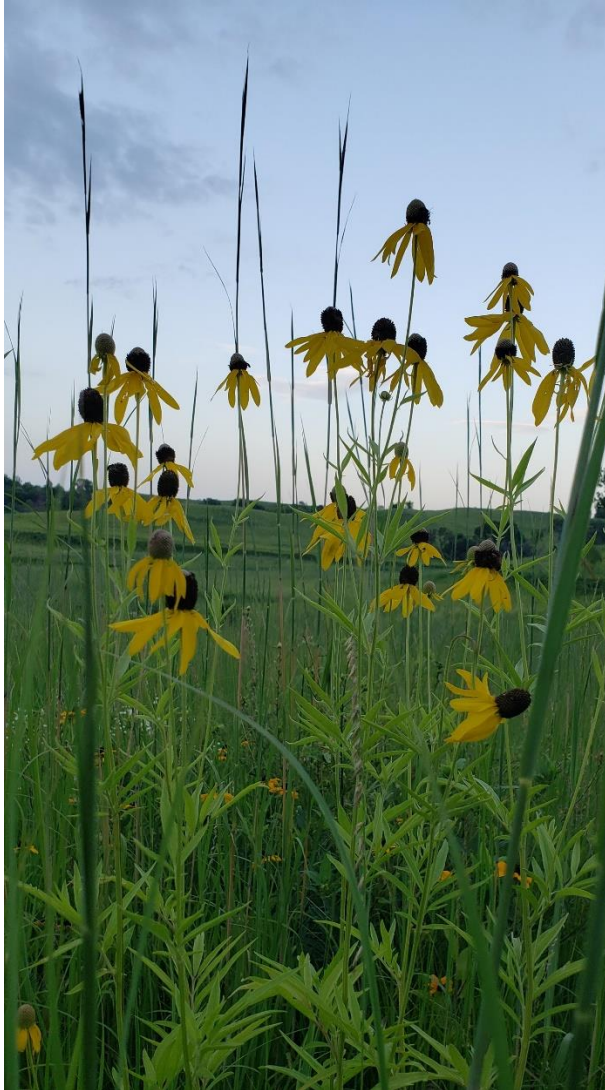
Gray-headed coneflower

Full or partial sun

Medium to medium-dry soil moisture

Height: 5 feet

Blooms July-September



Silphium laciniatum

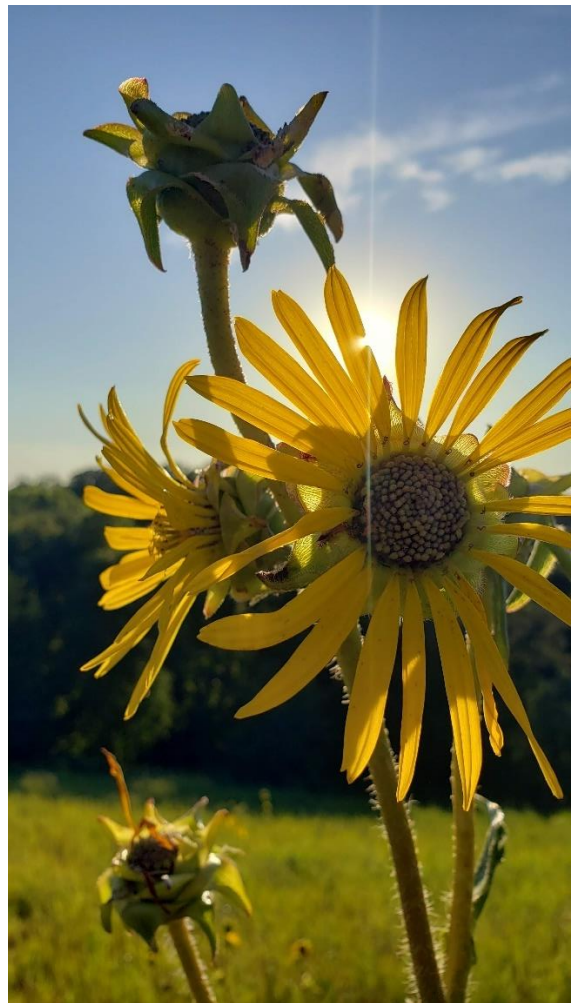
Compass plant

Full or partial sun

Dry to medium wet soil moisture

Height: 8 feet

Blooms June-September



Solidago rigida

Stiff goldenrod

Full or partial sun

Dry to medium wet soil moisture

Height: 4 feet

Blooms August-October



Image source: <https://www.prairiemoon.com/solidago-rigida-stiff-goldenrod-prairie-moon-nursery.html>

Vernonia fasciculata

Ironweed

Full or partial sun

Medium to medium wet soil moisture

Height: 6 feet

Blooms July-September



Andropogon gerardii

Big Bluestem

Full or partial sun

Medium-wet to dry soil moisture

Height: 7 feet

Blooms June-September

