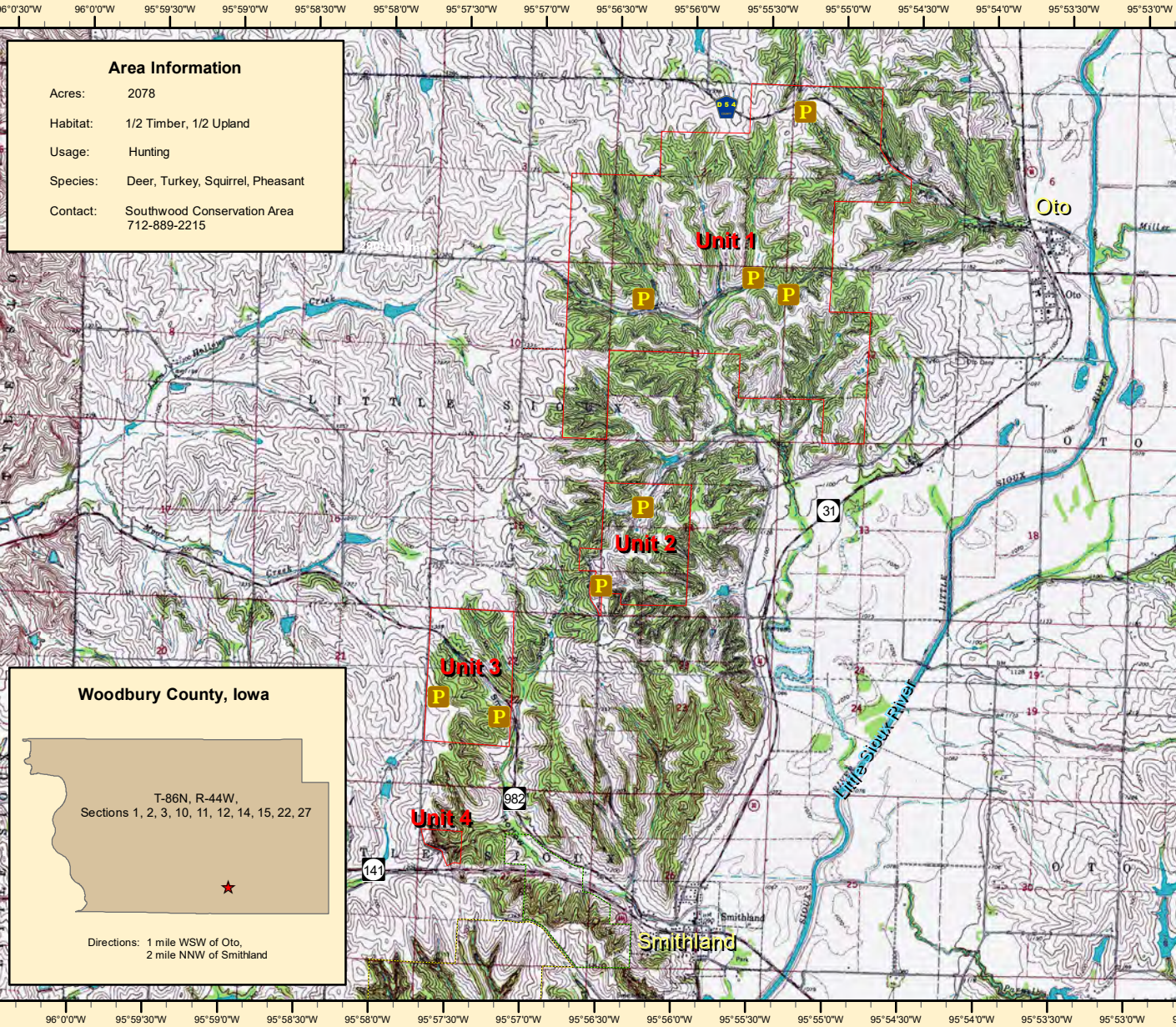
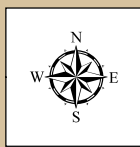




Woodbury County Conservation Dept.

4500 Sioux River Road, Sioux City, Iowa 51109
Phone: 712-258-0838
www.woodburyparks.org



Area Information

Acres: 2078

Habitat: 1/2 Timber, 1/2 Upland

Usage: Hunting

Species: Deer, Turkey, Squirrel, Pheasant

Contact: Southwood Conservation Area
712-889-2215

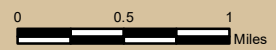
Woodbury County, Iowa

T-86N, R-44W,
Sections 1, 2, 3, 10, 11, 12, 14, 15, 22, 27

Directions: 1 mile WSW of Oto,
2 mile NNW of Smithland

Legend	
	Oak Ridge
	Parking areas
	Fowler Forest Preserve
	Southwood Conservation Area

Oak Ridge



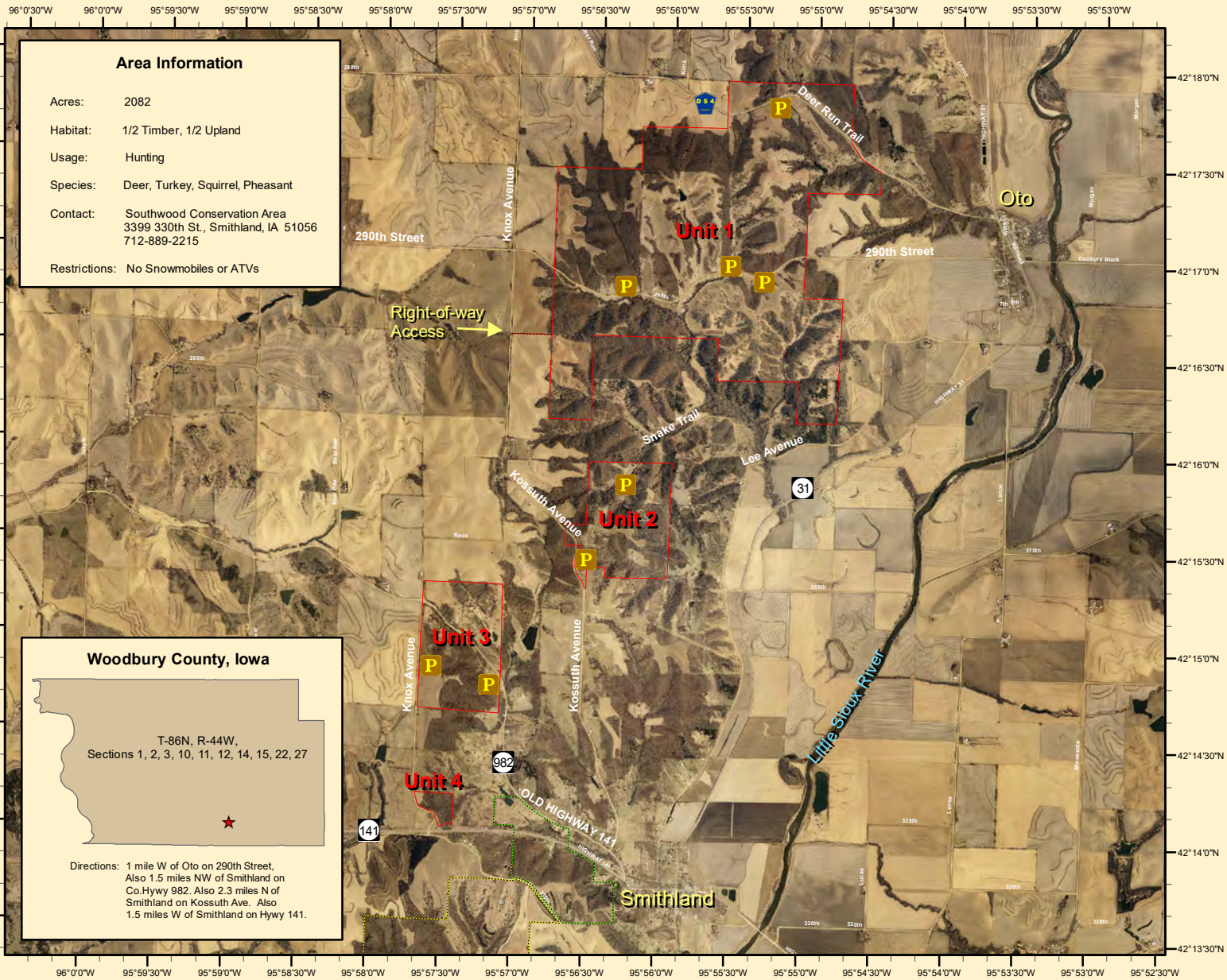
Aerial Photo - Summer, 2010
Map Creation Date: 1/2011

Disclaimer: Information and boundaries depicted on this map have been carefully reviewed. However, this data is not guaranteed to be free of errors or inaccuracies as provided by Woodbury County or other providers and sources of data contained in this map. Boundary signs have been placed on our areas to ensure users do not trespass on private property.



Woodbury County Conservation Dept.

4500 Sioux River Road, Sioux City, Iowa 51109
Phone: 712-258-0838
www.woodburyparks.org



Area Information

Acres: 2082

Habitat: 1/2 Timber, 1/2 Upland

Usage: Hunting

Species: Deer, Turkey, Squirrel, Pheasant

Contact: Southwood Conservation Area
3399 330th St., Smithland, IA 51056
712-889-2215

Restrictions: No Snowmobiles or ATVs

Woodbury County, Iowa

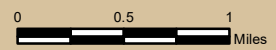
T-86N, R-44W,
Sections 1, 2, 3, 10, 11, 12, 14, 15, 22, 27

Directions: 1 mile W of Oto on 290th Street,
Also 1.5 miles NW of Smithland on
Co.Hwy 982. Also 2.3 miles N of
Smithland on Kossuth Ave. Also
1.5 miles W of Smithland on Hwy 141.

Legend

	Oak Ridge		Parking areas
	Fowler Forest Preserve		
	Southwood Conservation Area		

Oak Ridge



Aerial Photo - Summer, 2010
Map Creation Date:1/2011

Disclaimer: Information and boundaries depicted on this map have been carefully reviewed. However, this data is not guaranteed to be free of errors or inaccuracies as provided by Woodbury County or other providers and sources of data contained in this map. Boundary signs have been placed on our areas to ensure users do not trespass on private property.



Woodbury County Conservation Dept.

4500 Sioux River Road, Sioux City, Iowa 51109
Phone: 712-258-0838
www.woodburyparks.org



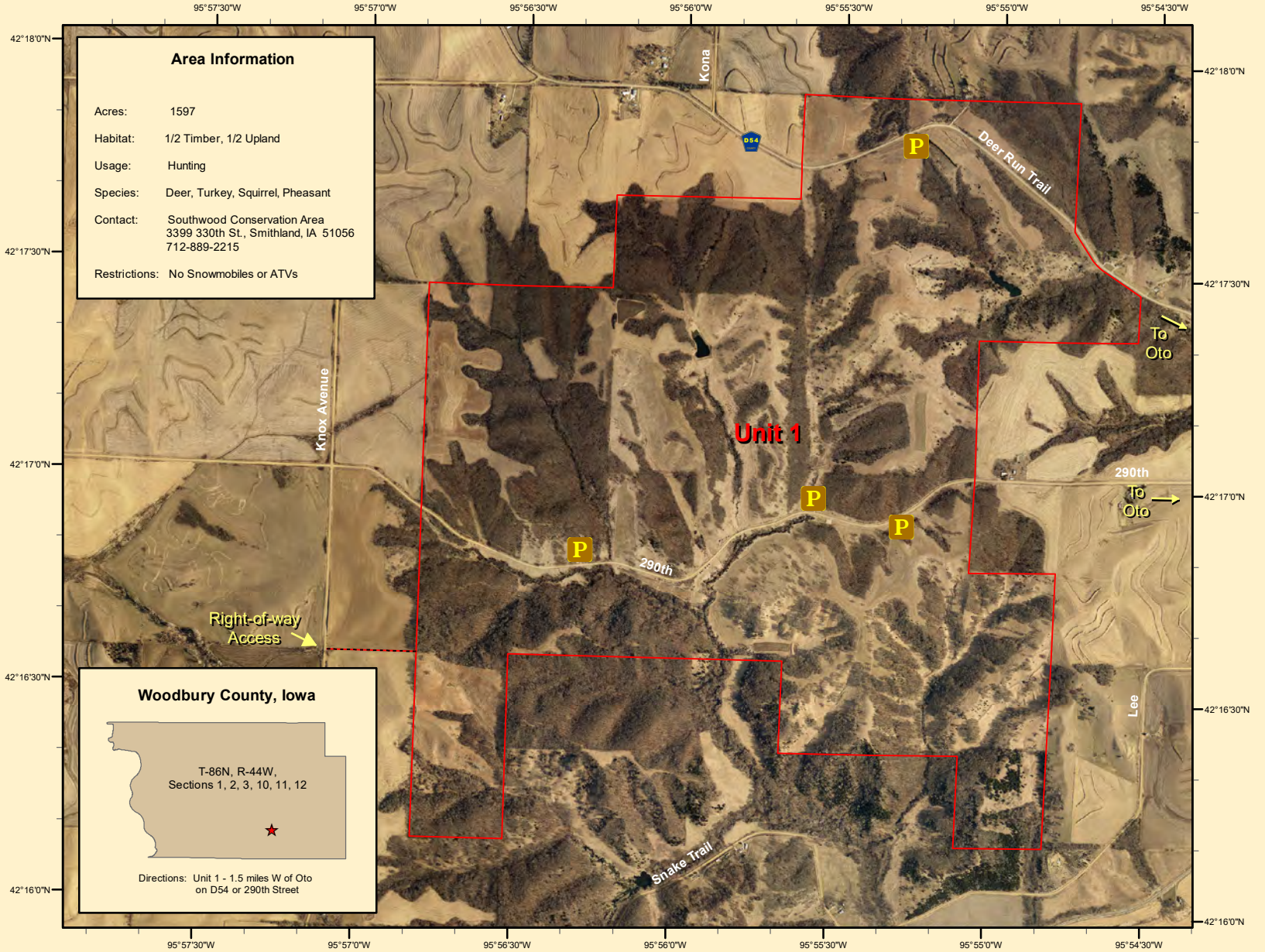
Area Information

Acres: 1597
Habitat: 1/2 Timber, 1/2 Upland
Usage: Hunting
Species: Deer, Turkey, Squirrel, Pheasant
Contact: Southwood Conservation Area
3399 330th St., Smithland, IA 51056
712-889-2215
Restrictions: No Snowmobiles or ATVs

Woodbury County, Iowa

T-86N, R-44W,
Sections 1, 2, 3, 10, 11, 12

Directions: Unit 1 - 1.5 miles W of Oto
on D54 or 290th Street



Legend

- Oak Ridge - Unit 1
- P Parking areas
- Right-of-way access

Oak Ridge Unit 1



Aerial Photo - Summer, 2010
Map Creation Date: 1/2011

Disclaimer: Information and boundaries depicted on this map have been carefully reviewed. However, this data is not guaranteed to be free of errors or inaccuracies as provided by Woodbury County or other providers and sources of data contained in this map. Boundary signs have been placed on our areas to ensure users do not trespass on private property.



Woodbury County Conservation Dept.

4500 Sioux River Road, Sioux City, Iowa 51109
Phone: 712-258-0838
www.woodburyparks.org

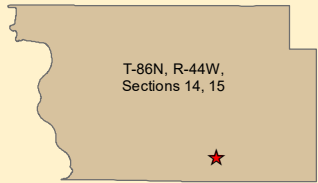


95°57'0"W 95°56'30"W 95°56'0"W

Area Information

Acres: 229
Habitat: 2/3 Timber, 1/3 Upland
Usage: Hunting
Species: Deer, Turkey, Squirrel, Pheasant
Contact: Southwood Conservation Area
3399 330th St., Smithland, IA 51056
712-889-2215
Restrictions: No Snowmobiles or ATVs

Woodbury County, Iowa



Directions: Unit 2 - 2.3 miles N of Smithland on Kossuth.

95°57'0"W 95°56'30"W 95°56'0"W

42°15'30"N

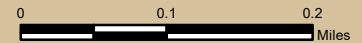
42°15'30"N

95°57'0"W 95°56'30"W 95°56'0"W

Legend

- Oak Ridge - Unit 2
- Parking areas

Oak Ridge Unit 2



Aerial Photo - Summer, 2010
Map Creation Date: 1/2011

Disclaimer: Information and boundaries depicted on this map have been carefully reviewed. However, this data is not guaranteed to be free of errors or inaccuracies as provided by Woodbury County or other providers and sources of data contained in this map. Boundary signs have been placed on our areas to ensure users do not trespass on private property.



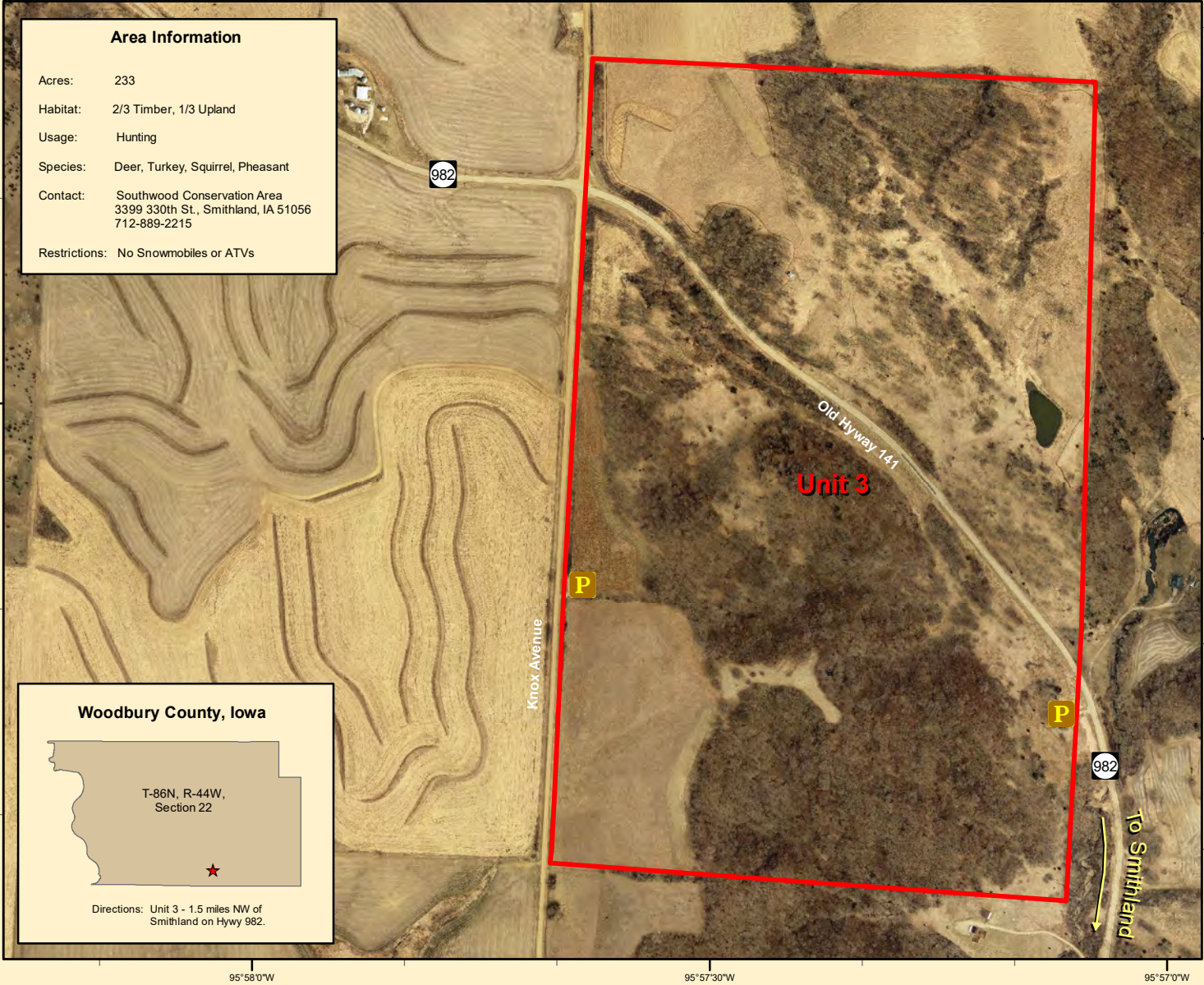
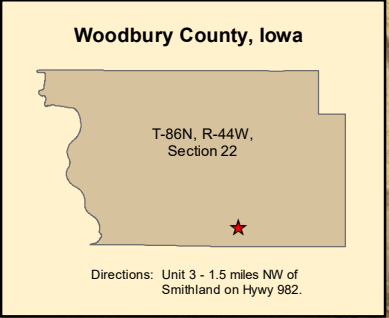
Woodbury County Conservation Dept.

4500 Sioux River Road, Sioux City, Iowa 51109
Phone: 712-258-0838
www.woodburyparks.org



Area Information

Acres: 233
 Habitat: 2/3 Timber, 1/3 Upland
 Usage: Hunting
 Species: Deer, Turkey, Squirrel, Pheasant
 Contact: Southwood Conservation Area
 3399 330th St., Smithland, IA 51056
 712-889-2215
 Restrictions: No Snowmobiles or ATVs



Legend

Oak Ridge - Unit 3

P Parking areas

Oak Ridge Unit 3

0 0.1 0.2
Miles

Aerial Photo - Summer, 2010
Map Creation Date: 1/2011

Disclaimer: Information and boundaries depicted on this map have been carefully reviewed. However, this data is not guaranteed to be free of errors or inaccuracies as provided by Woodbury County or other providers and sources of data contained in this map. Boundary signs have been placed on our areas to ensure users do not trespass on private property.



Woodbury County Conservation Dept.

4500 Sioux River Road, Sioux City, Iowa 51109
Phone: 712-258-0838
www.woodburyparks.org



42°14'0"N



Area Information

Acres:	20
Habitat:	Timber
Usage:	Hunting
Species:	Deer, Turkey, Squirrel
Contact:	Southwood Conservation Area 3399 330th St., Smithland, IA 51056 712-889-2215
Restrictions:	Shooting firearms restricted to distance greater than 200 yards from occupied building without permission. No Snowmobiles or ATVs

Woodbury County, Iowa

T-86N, R-44W,
Section 27

Directions: Unit 4 - 1.5 miles W of Smithland on
Hywy 141, N on Knox 100 yards..

Legend

 Oak Ridge - Unit 4

Oak Ridge Unit 4



Aerial Photo - Summer, 2010
Map Creation Date: 1/2011

Disclaimer: Information and boundaries depicted on this map have been carefully reviewed. However, this data is not guaranteed to be free of errors or inaccuracies as provided by Woodbury County or other providers and sources of data contained in this map. Boundary signs have been placed on our areas to ensure users do not trespass on private property.