

# Overview of China's Loess

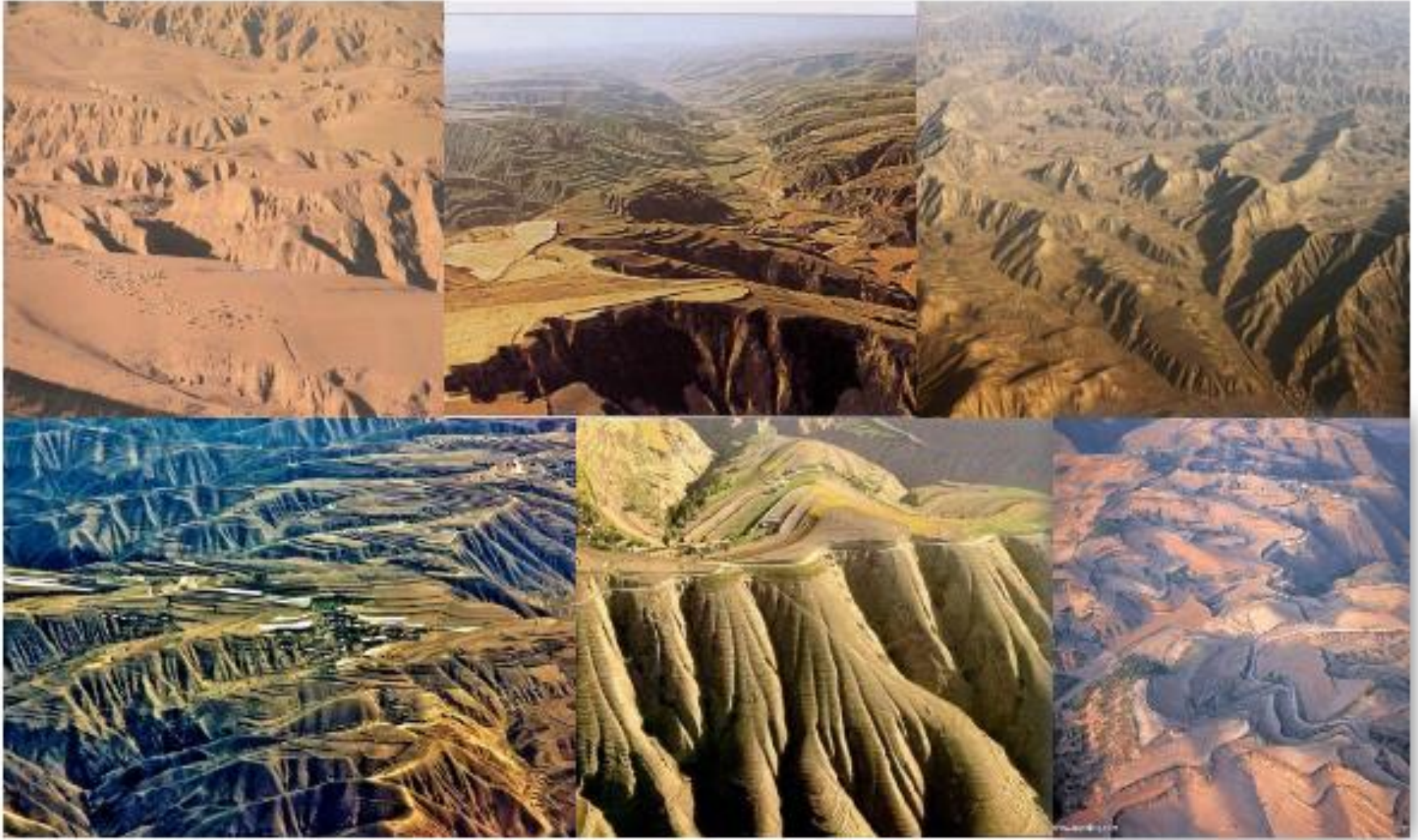
Jinfeng Zhou, PhD

Secretary General

China Biodiversity Conservation and Green Development Foundation(CBCGDF)

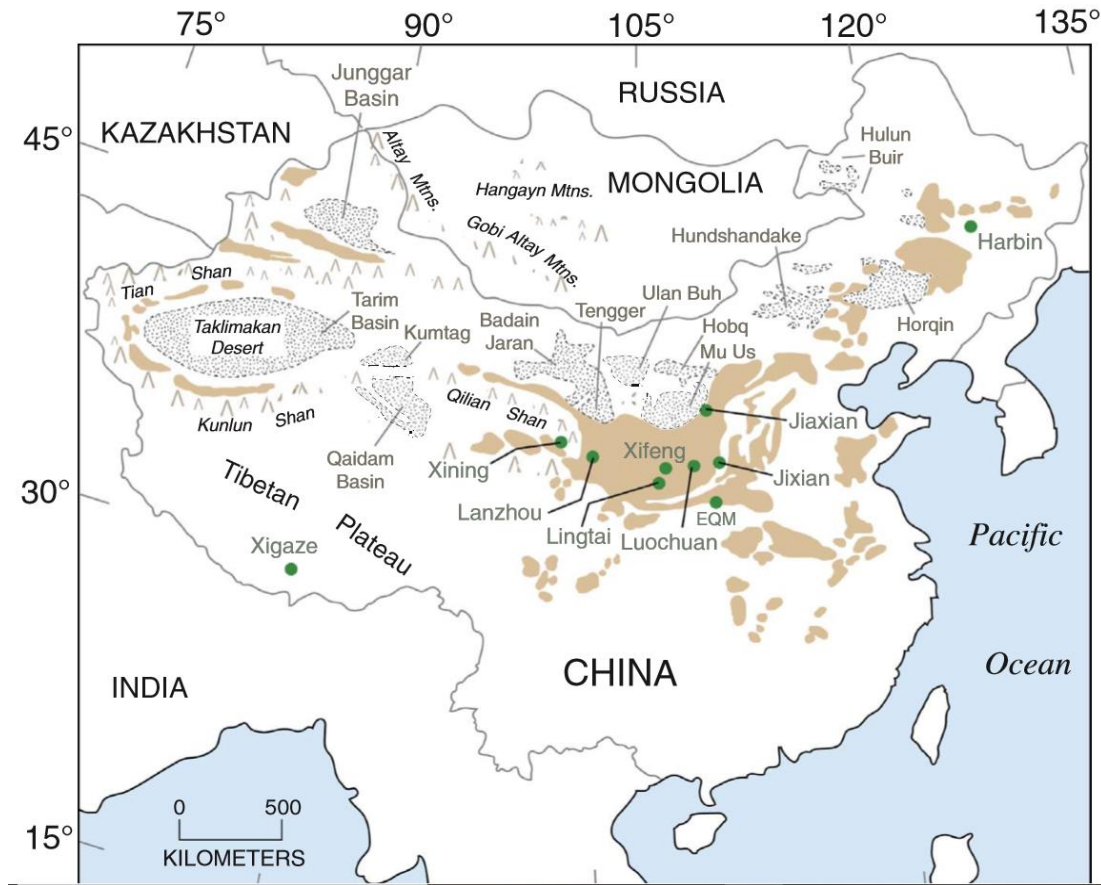


# Loess Plateau - A Cradle of Chinese Culture





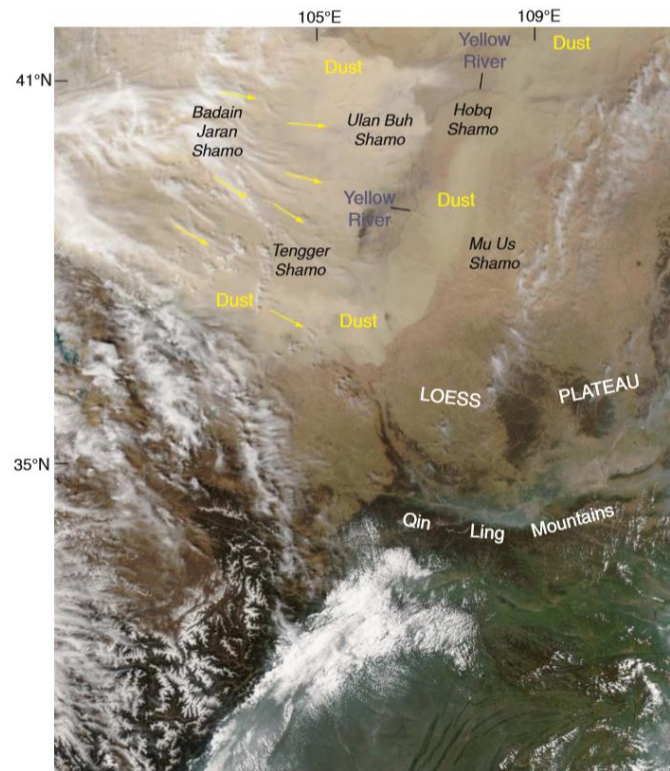
# Distribution of loess shape in China



Distribution of loess (brown shaded areas), sandy deserts in basins (stippled areas), mountain ranges, and localities referred to in the text in China. Loess distribution from Liu (1988) and Sun and Muhs (2007).



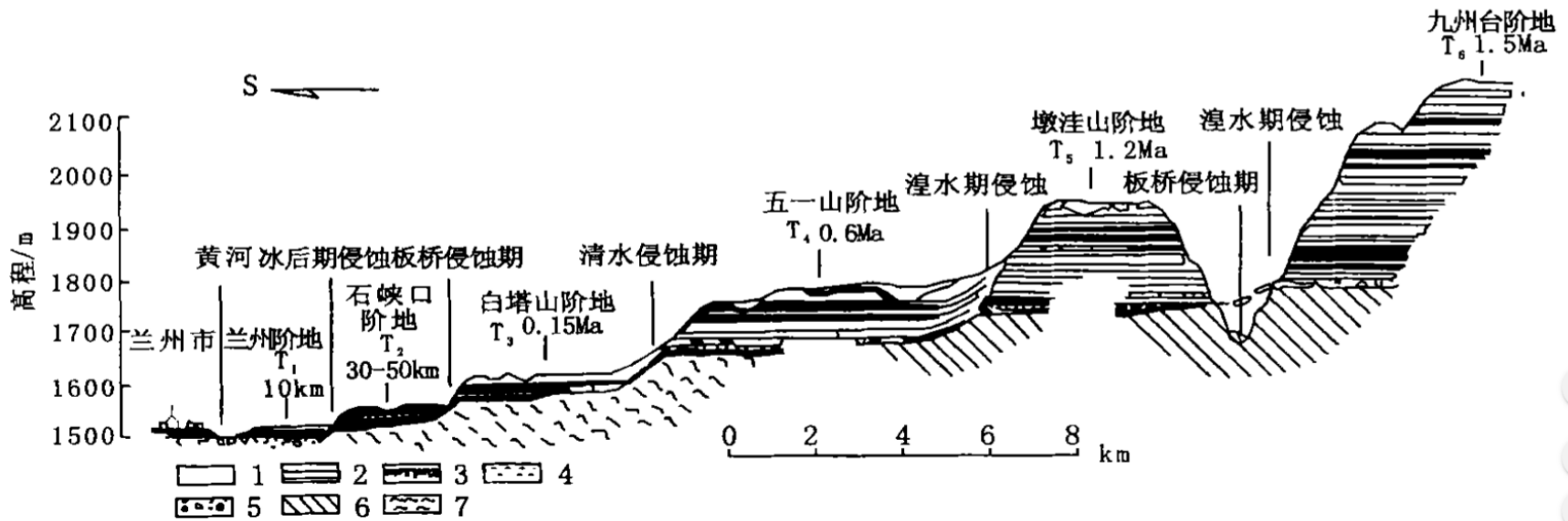
# Formation of the Loess Plateau



Moderate Resolution Imaging Spectroradiometer (MODIS) image taken from the NASA Aqua satellite showing dust originating from the Badain Jaran Shamo, Tengger Shamo, and Ulan Buh Shamo (sandy deserts) and heading southeast towards the Chinese Loess Plateau. Image acquired on 10 April 2006, and used here courtesy of the MODIS Rapid Response Team at NASA GSFC.



# The Evolution History of the Loess Plateau



Sectional view of the Yellow River terrace in Lanzhou (Li Jijun, 1989)

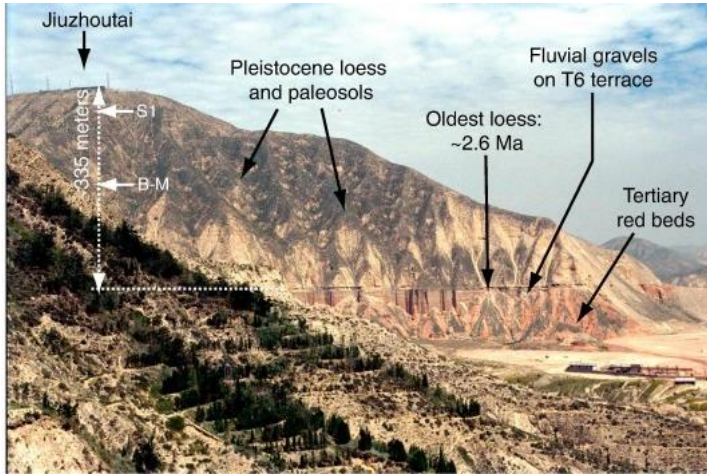


## Soil and water loss in the Loess Plateau





# The importance of the Loess Plateau



History



Economic

Ecosystem



# Loess Plateau - the Future of Zhuonai Lake







# China Biodiversity Conservation and Green Development Foundation (CBCGDF)



China is one of the most biologically rich countries in the world. However, in general, the flora and fauna community is greatly threatened, and the loss of genetic resources is also a major problem.

In order to reasonably protect China's biodiversity, China Biodiversity Conservation and Green Development Foundation (CBCGDF) is one of many non-governmental organizations that have invested in the protection of these species, which are threatened with their survival. CBCGDF is committed to protecting biodiversity, improving the ecological environment and promoting green and sustainable development.



## CBCGDF's Areas of Work



- China Conservation Areas for Sth. at Somewhere (CCAfa);
- Volunteers' efforts;
- Environmental Public Interest Litigation (EPIL);
- Ecological protection based on traditional culture;
- International exchange and cooperation;
- Initiatives, meetings and appeals;
- Sustainable Development;
- Ecological protection and poverty alleviation.



# China Conservation Areas for Something at Somewhere (CCAfa)



CBCGDF created the CCAfa concept in an innovative manner, which is fast, effective and low cost. CCAfa sites are able to aggregate a large number of participants and join in the identification, establishment and management of protected areas. The promoters of CCAfa work come from individuals and groups from all walks of life.

Since the establishment of the first CCAfa site in April 2016, CBCGDF has now established more than one hundred China Conservation Areas. On the stage of protecting the biodiversity of China and the world, CBCGDF is walking fast and well.



# China Conservation Area for Whooper Swan at Minqin



CBCGDF established the China Conservation Area for Whooper Swan in Minqin County, Gansu Province, in September 2016.



# China Conservation Area for Mongolian gazelle at Zhongwei



China Conservation Area for Mongolian gazelle at Zhongwei.



# China Conservation Area for Desert and Wetland at Tengger



CBCGDF established China Conservation Area for Desert and Wetland in the Tengger desert region in July 2016.



# Environmental Public Interest Litigation - Tengger Desert Pollution Case



The “Tengger case” was selected as one of the top ten civil administration cases of the People's Court in 2017.



# Environmental Public Interest Litigation - A Case of Water Source Pollution in Jingning County, Gansu Province



The drinking water source in Jingning County, Pingliang City, Gansu Province, depended by 130,000 of the population, was seriously polluted due to factory sewage. After learning of the incident, on May 26, 2015, CBCGDF filed an EPIL case against the enterprises causing pollution in the Pingliang City Intermediate court in Gansu province.





# The story of heavy metal water pollution between Nut brothers and Xiaohaotu County



The color of the same as orange juice heavy metal water in Shaanxi Yulin Xiaohaotu County.



# The Story of Heavy Metal Water Pollution in Xiaohaotu County and Nut Brothers



The first heavy metal music live in Xiaohaotu County - Silent Concert. The artist Nut Brothers, as well as the band Dust Lost.



# China's First Metropolitan Drinking Water Source Protection Fund



The Metropolitan Drinking Water Source Protection Fund, which was jointly launched in Beijing in August 2015 by a number of domestic and foreign institutions and related enterprises such as the Beijing Forest Society, is a special fund under the China Biodiversity Conservation and Green Development Foundation (CBCGDF) for the main purpose of water source protection.



# The Problem of Mono plant species Afforestation



中国绿发会

Ant Forest

# Thank you!

