



Harrison County  
GIS & Mapping  
111 N. 2nd Ave.  
Logan, IA 51546  
(712) 644-1324  
gis@harrisoncountyaia.org

Published: May 5, 2021

The Data contained in this map is provided "as is" without warranty or any representation of accuracy, timeliness or completeness. Harrison County makes no warranties, express or implied, as to the use of the Data contained in this map. There are no implied warranties of merchantability or fitness for a particular purpose. The viewer acknowledges and accepts the limitations of the Data contained in this map, including the fact that said Data is dynamic and is in a constant state of maintenance, correction and update.



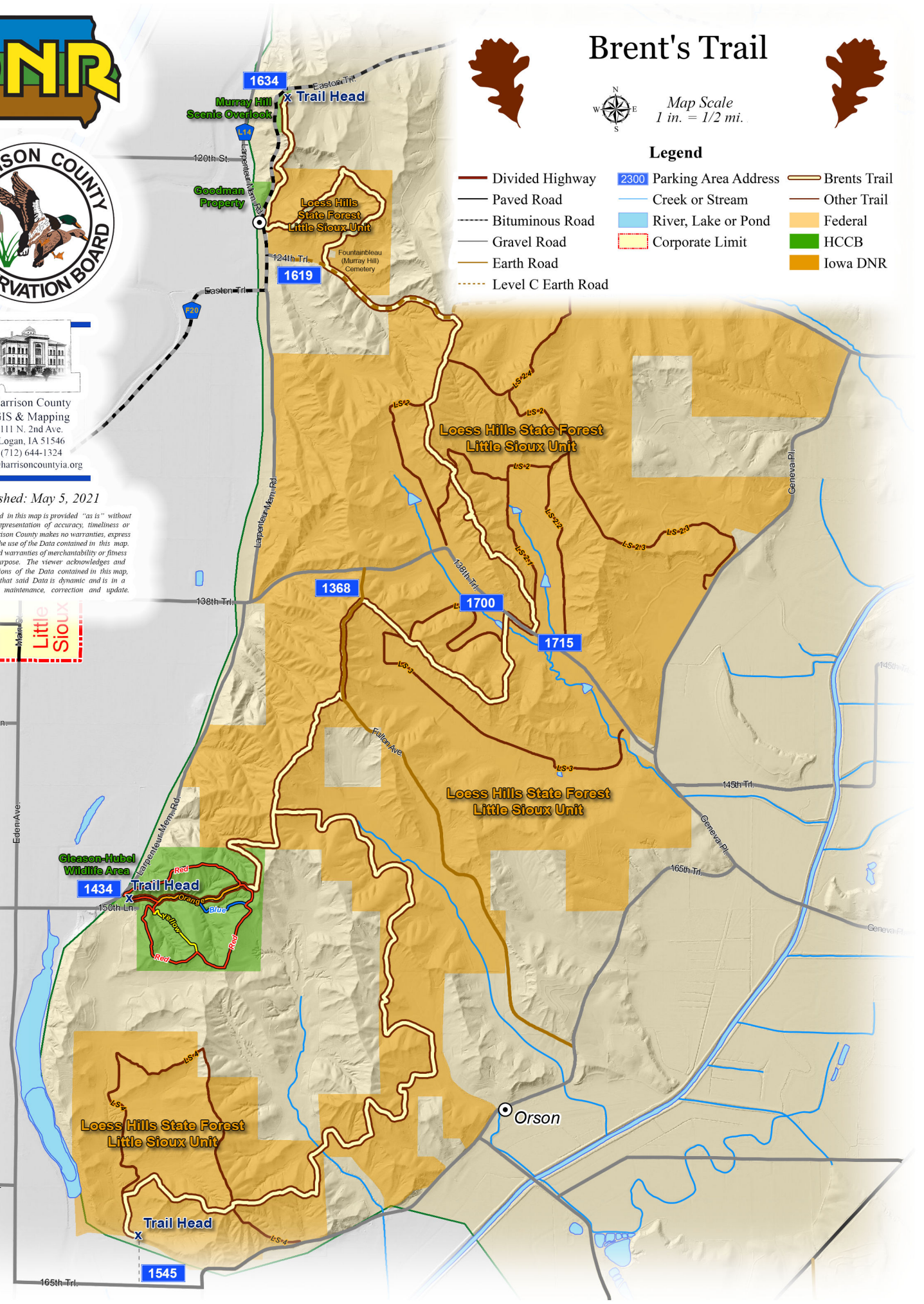
# Brent's Trail



Map Scale  
1 in. = 1/2 mi.

## Legend

- Divided Highway
- Paved Road
- Bituminous Road
- Gravel Road
- Earth Road
- Level C Earth Road
- Parking Area Address
- Creek or Stream
- River, Lake or Pond
- Corporate Limit
- Brents Trail
- Other Trail
- Federal
- HCCB
- Iowa DNR



165th Trl. 1545